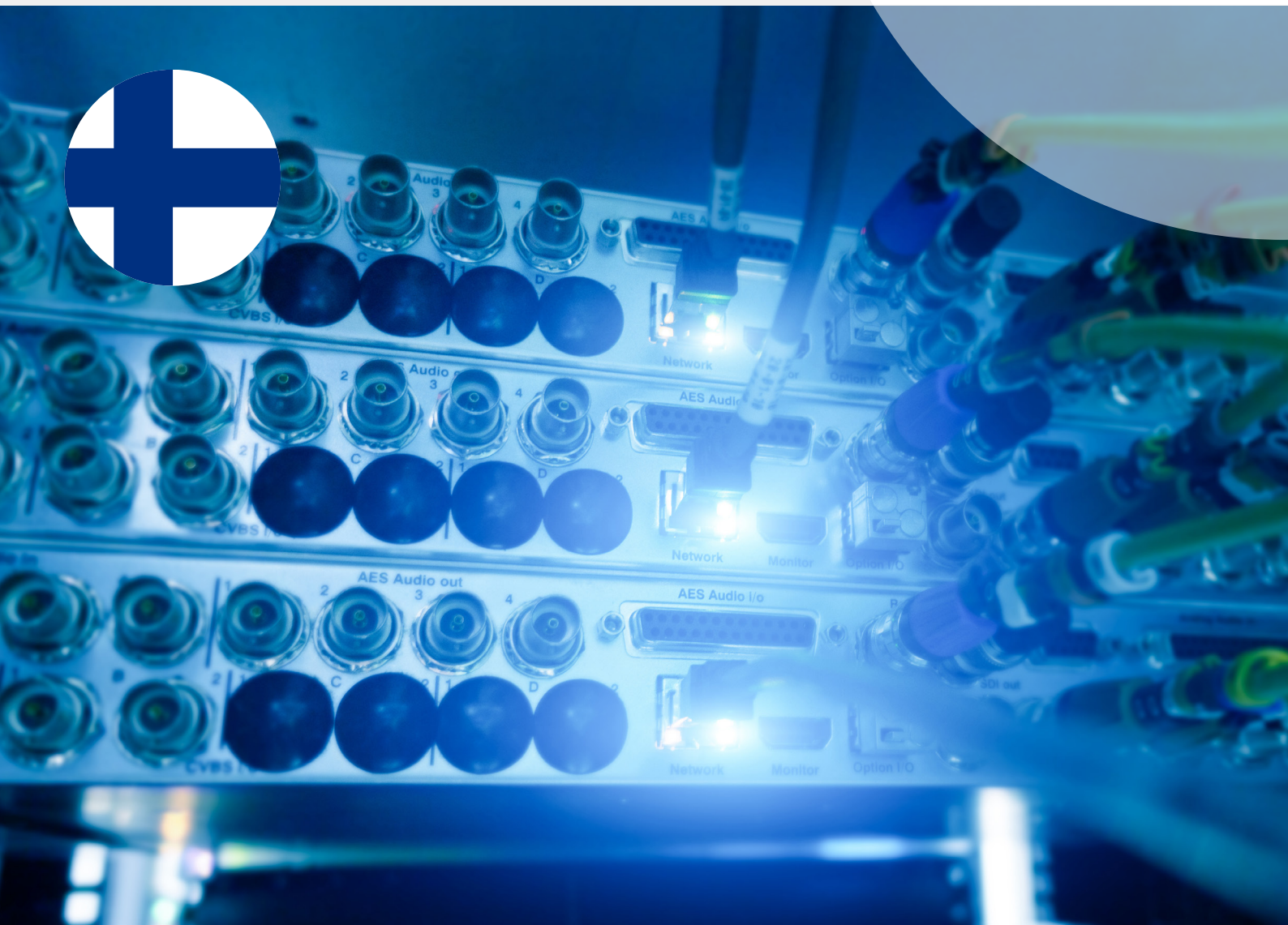


Streamwise Test Stream Suite - Cable Ready HD

Fully customized test stream suites
for Cable Ready HD self-testing





Technical Specification

The Streamwise Test Stream Suite from Labwise consists of carefully prepared video and audio test streams for self-testing against the Finnish Unified IRD Test Specification and the relevant parts of the Scandinavian NorDig Test Specification. The Streamwise Test Stream Suite helps the digital TV device manufacturers to better develop compliant products for the Finnish cable TV networks. The Streamwise Suite is supplied on a HDD with comprehensive instruction documentation and optional hardware components.

Contents of Suite

The Streamwise Test Stream Suite comes with various software, hardware and documentation components, creating a fully integrated test kit, for example, for product developers and system test engineers.

Test Streams

The Streamwise Test Streams consist of carefully prepared video and audio streams and clips customized for performing tests against the Cable Ready HD test cases of the Finnish Unified test specification.

The Streamwise Suite contains streams for all the PSI/SI signalling test cases of the Cable Ready HD requirements, including, for example:

- Proper automatic and manual tuning procedures
- Dynamic service list updates
- Correct aspect ratio conversions
- Multi-channel audio options
- DVB subtitling and teletext features
- In addition to MPEG-2 SDTV streams, all the necessary
- MPEG-4 HDTV audio and video test streams are naturally included also

Documentation

The Streamwise Test Stream Suite is delivered with comprehensive documentation with instructions. The documentation explains the contents of each test stream, the way the streams are to be used against the test cases and what are the various parameter settings to be used with each stream.

Stream Player

The Streamwise Suite is delivered with a dedicated Labwise Streamer application for playing out the test streams. The Labwise Streamer comes with a handy HTML based user interface for easy operation.

Package Configurations

In addition to the Test Streams and the Documentation, Labwise also delivers necessary hardware components in several optional configurations with the Streamwise Test Stream Suite. The configurations are the following:

- The Test Streams, Documentation and the Labwise Streamer
- The Test Streams, Documentation and the Labwise Streamer, with two multi-standard DVB-C modulator boards.
- The Test Streams, Documentation and the Labwise Streamer, with two multi-standard DVB-C modulator boards, and with a PC (desktop or rack-mount) with the Streamwise Suite fully pre-installed.

System requirements

The Streamwise Suite currently supports the following minimum hardware configuration:

- 2.8 GHz dual-core Intel
- 2 GB RAM
- 500 GB hard drive
- Windows XP
- DekTec modulator boards

AAA: Labwise is rated financially to the best AAA class • Cable Ready HD: Labwise is an official test laboratory for the Cable Ready HD certification tests of the DVB-C products in the Finnish market